

The ReEntry Court Project

Fort Wayne, Indiana

September 20, 2004

Honorable John F. Surbeck, Jr.

Allen Superior Court

“History and Overview of the Allen County ReEntry Court”

Contact Information

Allen Superior Court
715 S. Calhoun, Rm. 204
Fort Wayne, IN 46802

Direct: 260-449-7395

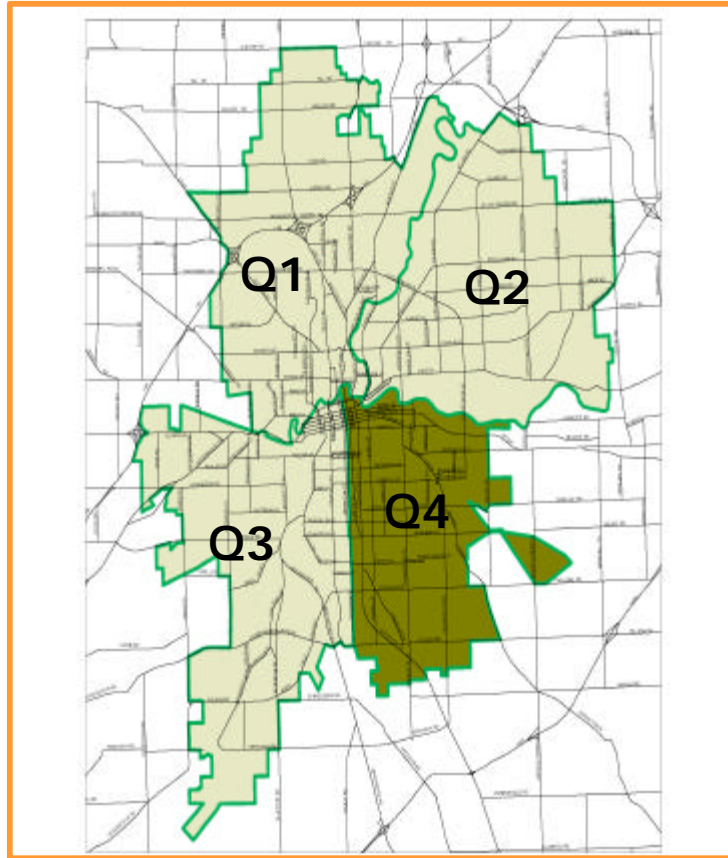
Fax: 260-449-4799

Email: john.surbeck@co.allen.in.us

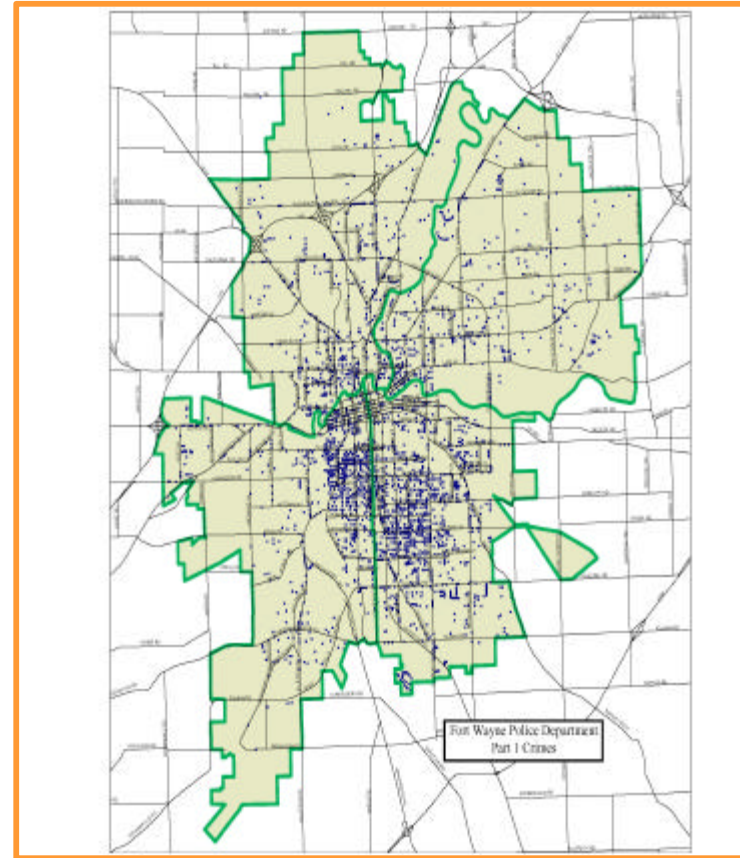
ReEntry Court Project

- Majority of crime committed by people previously incarcerated
- Allen County recidivism rates mirrored national statistics
 - 45% returned to prison after 1 year
 - 55% returned to prison after 2 years
 - 67% after three years
- System not designed to address needs of or provide access to services for returning inmates

Quadrant 4



Part One Crimes



ReEntry Court Mission Statement

The mission of the Allen County ReEntry Court is to enhance the reintegration of offenders into the community through the provision of necessary services to those returning offenders while protecting the safety of the community.

Goals:

- Produce a system that would be effective with serious and violent offenders.
- Produce a system that would operate within local funding parameters.

ReEntry Court Project

- Two-year Pilot: July 1, 2001 to June 30, 2003
- Targeted Southeast Quadrant of the City of Fort Wayne
- One year-long program that included a portion of parole time
- Initial incentive in the form of early release
- Incentive upon completion of program is possible reduction of remaining parole/probation time

Community Transition Act

(Indiana Code 11-12-10)

- Passed in 1999 to ease prison crowding
- Early release for selected inmates:
 - A and B Felons 120 Days
 - C Felons 90 Days
 - D Felons 60 Days
 - Nonviolent Drug Offenders 180 Days
- Voluntary Participation by counties
- Level of supervision and eligibility determined by sentencing Court
- DOC pays \$15.00 per day during early release

Community Partners

- Allen Superior Court
- City of Ft Wayne
 - Police Department
 - Mayor's Office
- Indiana DOC
- Indiana Parole
- Indiana Criminal Justice Institute
- Park Center Community Mental Health Center
- Fort Wayne Housing Authority
- Faith-Based Organizations
- Neighborhoods
- Universities
- Businesses
- Workforce Investment Act Partners
- Division of Family and Children
- Prosecuting Attorney's Office
- Adult Probation Department

Sheila Hudson, Executive Director

Allen County Community Corrections

“Program Results and Redirection”

Contact Information

Allen County Community Corrections

201 West Superior St

Fort Wayne, IN 46802

Direct: 260-449-7252

Fax: 260-449-7308

Email: sheila.hudson@co.allen.in.us

ReEntry Court Project 2-Year Findings

- Data Collection
 - Collected Over Two Years
 - Extensive Demographic Data
 - Recidivism Data
 - Arrest and Return to Prison
 - Cost Data
 - Technical Violations

2 Year Pilot Results

Cost Savings at 24 months

Within 1 st 24 Months	Number of Charges	Expected Number	Actual Cost	Expected Cost	Total Savings
Violent Offenses	16	16.31	\$304,064	\$1,776,873	\$1,472,809
Property Offenses	11	40.46	\$31,975	\$119,833	\$87,858
Drug Offenses	9	35.07	\$61,884	\$290,324	\$228,440
Public Order	18	25.82	\$179,922	\$172,532	\$(7,390)
Other	12	3.88	\$41,256	\$13,326	\$(27,930)
Totals	66	122	\$619,101	\$2,372,888	\$1,753,787

2 Year Pilot Results

Total Savings (Cost) to State (24 Months)

	Cost per Day	# of Days	
Cost of Incarceration	\$55.00	20,853	\$1,146,915
State Reimbursement	\$15.00	20,853	\$ 312,795
Total Savings to State	\$40.00	20,853	\$ 834,120

2 Year Pilot Results

Savings to Community

(24 months)

Expected Cost of Re-offending \$2,372,888

Actual Cost of Re-offending \$619,101

**Total Savings To
Community \$1,753,787**

2 Year Pilot Results

Operational Costs

(24 months)

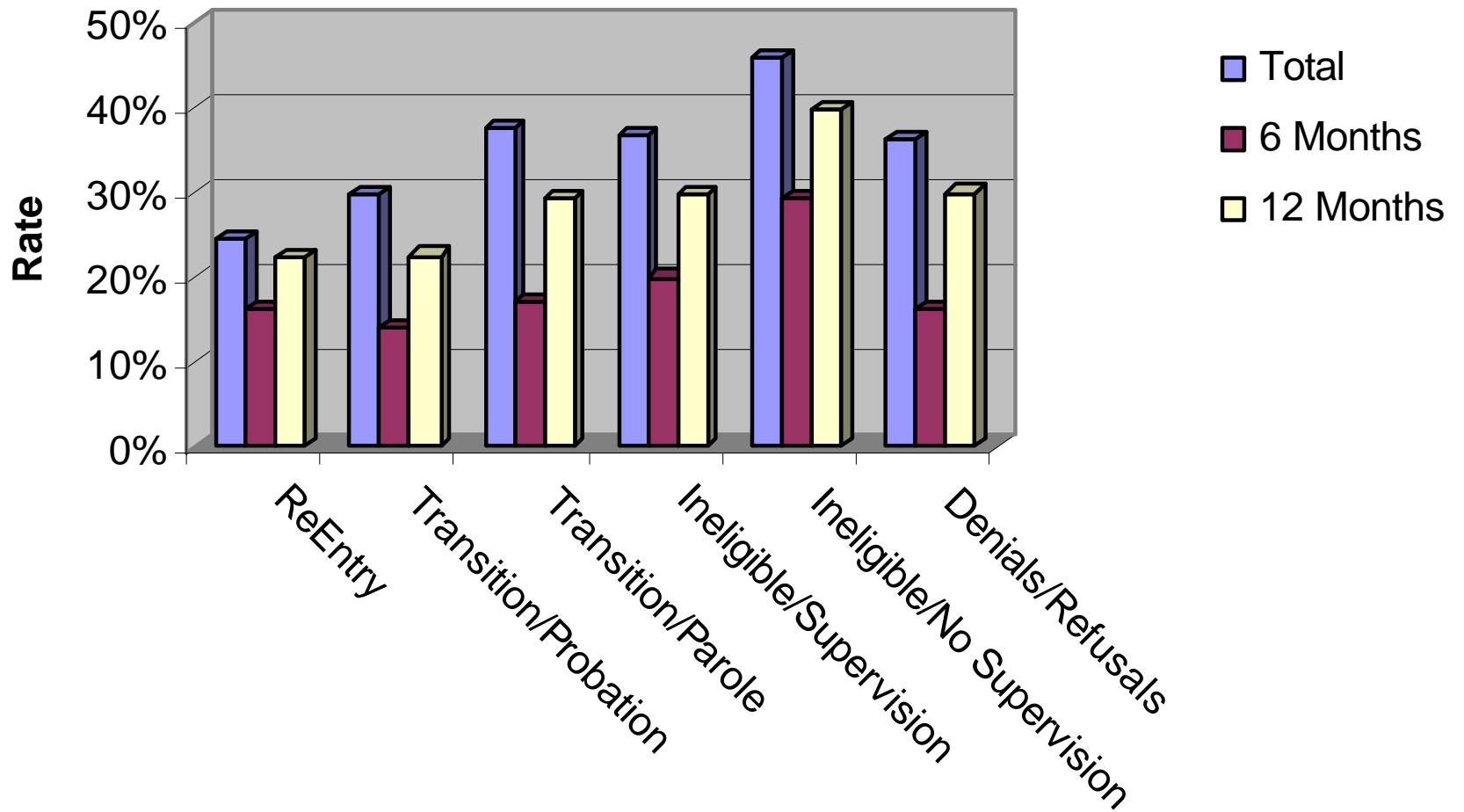
Actual Cost of Operation (\$250,000 per year)	\$500,000
Value of In-kind Services	\$135,000
Total Cost of Operation	\$635,000

2 Year Pilot Results

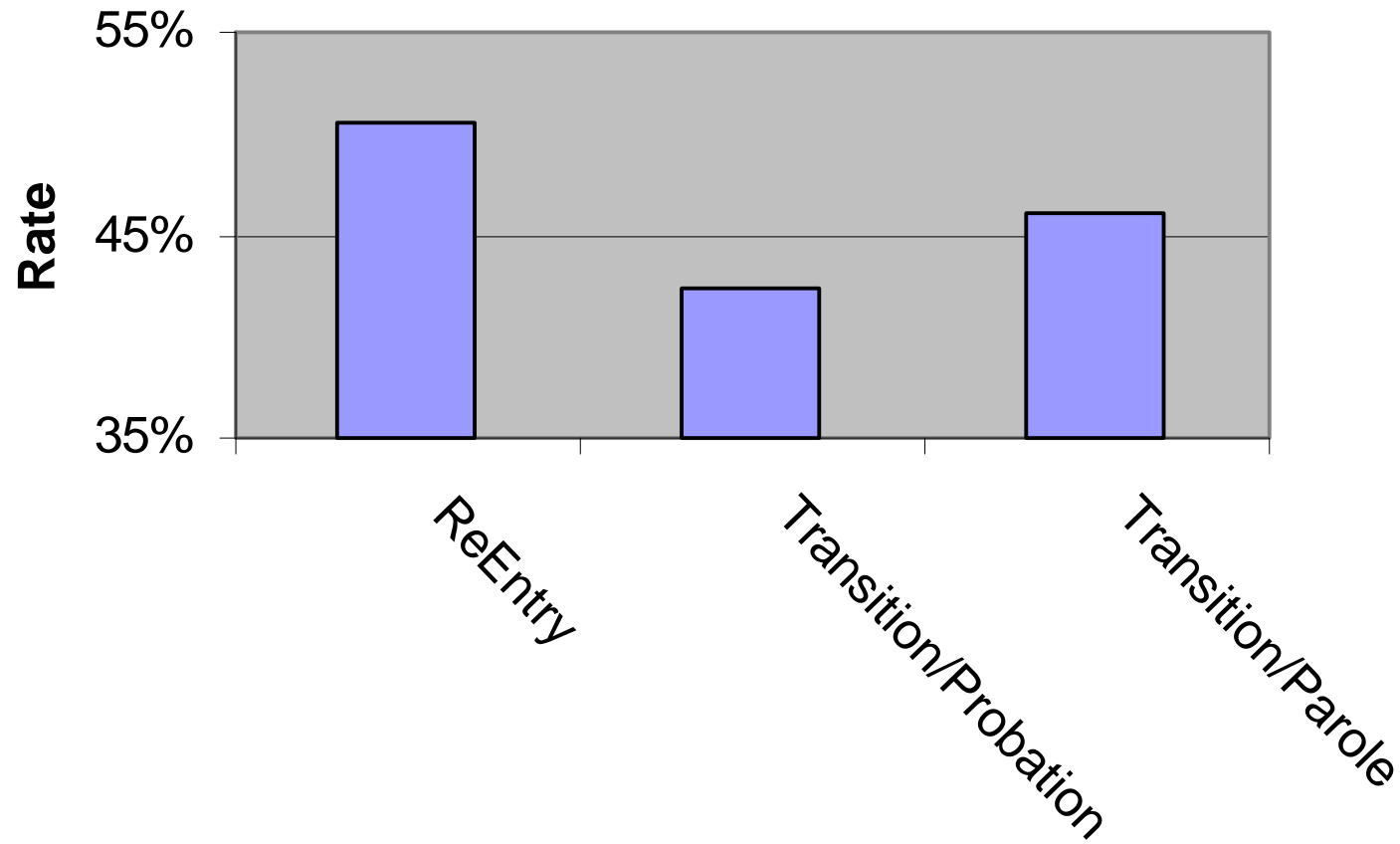
Cumulative Savings

Total Savings to State	\$834,120
Total Savings to Community	\$1,753,787
Total Cost of Operation	\$(635,000)
Total Savings	\$1,952,907

Rates of Rearrest Over Time



Technical Violation Rates



Stan Pflueger, ReEntry Director

Allen County Community Corrections

“Phases of ReEntry Including Enhanced Supervision, Mental Health”

Contact Information

Allen County Community Corrections

201 West Superior St

Fort Wayne, IN 46802

Direct: 260- 449-7252

Fax: 260 – 449-7308

Email: stan.pflueger@co.allen.in.us

Unique Elements

- Targeting of Serious and Violent Offenders
- Realignment of Resources
- Continual Judicial Involvement
- Forensic Mental Health Assessment
- Enhanced Police Supervision
- Team Approach to Case Management
- Cognitive Motivational Case Management
- Programs and Services

Forensic Mental Health Assessment

- Clinical Interviews
 - High rates of Substance Abuse, Depression, and Personality Disorders
- Psychological Testing
 - Multiple Tests/Multiple Data points for increased confidence in diagnoses
- Hare Psychopathy Checklist
 - Highest Risk Offenders (18-20% of Offenders)

Forensic Mental Health Assessment

Psychopathy

- Personality Pattern
 - Lack of Empathy, Impulsive, Sensation Seeking, Lack of Relationship Bonding
- Why a concern
 - High Rates of Recidivism, Disrupt Programming
- Dangers
 - Empathy Training
 - Ignoring the Problem
- What Can be Done
 - Enhanced Police Supervision

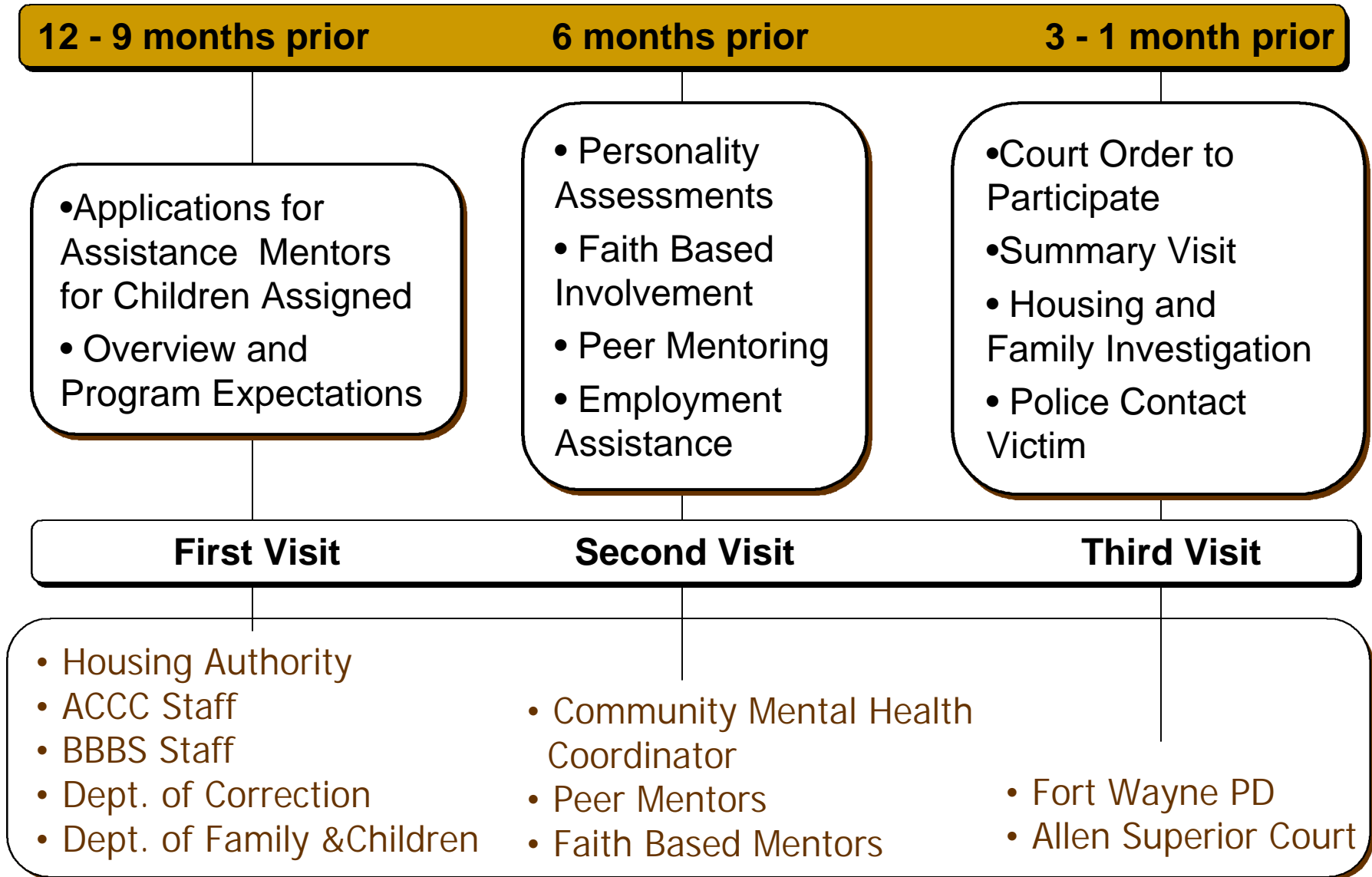
ReEntry Team Composition

- ReEntry Director
- District Parole Supervisor
- Transition Coordinator
- Supervising Clinical Psychologist
- Mental Health Practitioners
- ReEntry Court Case Managers
- Adult Probation Officers

Traveling Team Composition

- Community Mental Health Coordinator
- Mentors
- Community Corrections Staff
- Big Brothers Big Sisters Staff
- Peer Mentors

ReEntry Court – Readiness Phase



Enhanced Police Supervision

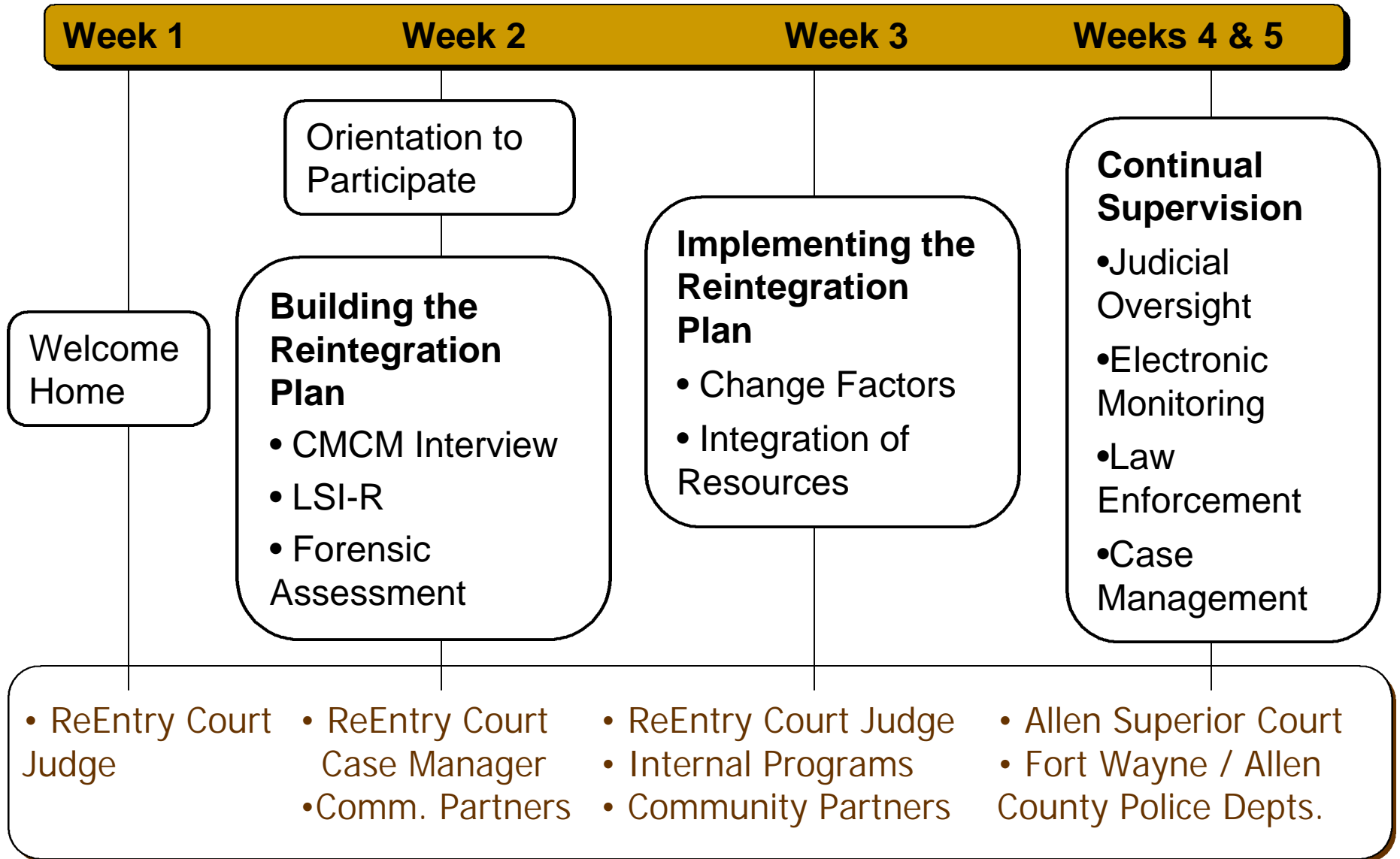
- **ReEntry Visitation Team**

- Initial visit with Deputy Chief to residence of victim to discuss safety concerns and safety plan;
- Second visit with Deputy Chief to relay welcome inmate back and discuss safety issues; and
- Subsequent visits with neighborhood reps or alone to provide information on neighborhood activities and resources and monitor progress.

- **Special Enforcement Team**

- Additional random home/work visits;
- Visits conducted during regular working shift when not on other assignment; and
- Responsible use of expanded discretionary search authority.

ReEntry Court – Transition Phase I



Anthony Hudson, Programs Director

Allen County Community Corrections

“Integrating Motivational Interventions
with Available Resources”

Contact Information

Allen County Community Corrections

201 West Superior St

Fort Wayne, IN 46804

Direct: 260-449-7252

Fax: 260-449-7308

Email: anthony.hudson@co.allen.in.us

Cognitive Motivational Case Management and the Integration of Resources

The Motivational Interview

- Avoid Pitfalls
- Establish Rapport
- Explore Concerns
- Set Agenda
- Assess Readiness/Motivation to Change or Stage of Change
- Practice Creative Thinking, Reflective Listening, Goal Setting skills

The Reintegration Plan

- Individualized
- Incorporates:
 - Motivation and Readiness for Behavior Change
 - Offender's Risk and Need
 - Criminogenic Factors for Involvement
 - Priority and Importance
 - Available Resources

Supporting the Plan

Internal Resources

- Substance Abuse Treatment:
Intensive Outpatient Est. July, 1997
- Cognitive Behavioral Intervention:
Choices Est. July, 1998
- Job-Readiness and Job Development:
The Employment Academy Est. Aug, 2002
- Transitional Job Opportunity:
Blue Jacket, Inc. Est. June, 2004
- Adult Education (GED Prep):
Adult Basic Skills Est. June, 2004
Motivational-Based Intervention:
Focusing On Reentry (FOR) A Change Est. Sept, 2004

Service Providers

- Counseling: Park Center Mental Health Center
- Mentoring: Big Brothers Big Sisters
Faith-Based Organizations
- Housing: Fort Wayne Housing Authority
- Family Reintegration: Unity Christ Church *Family Reconnect Program*
- Post-Secondary Ed: Ivy Tech State College
- Temporary Assistance: Division of Family and Children
Fort Wayne Housing Authority
- Parenting Skills: Community Action Northeast Indiana,
Stop Child Abuse and Neglect

ReEntry Court – Transition Phase II

Week 5 – 48

Month 6 – 12

Month 12 - 24

Judicial Oversight

Graduated Sanctions and Acknowledgement of Progress

Employment Academy

Blue Jacket, Inc.

Job Development

FOR a Change

Substance Abuse Treatment

Choices

MARKETPLACE

Adult Basic Skills (GED)

Community Resources

Cognitive Motivational Case Management

Enhanced Enforcement