

# The ReEntry Court Project

Fort Wayne, Indiana

October 6, 2004

ICCA Conference – Cincinnati, Ohio

# Honorable John F. Surbeck, Jr.

## Allen Superior Court

### **Contact Information**

Allen Superior Court  
213 S. Calhoun, Rm. 302  
Fort Wayne, IN 46802

Direct: 260-449-7583

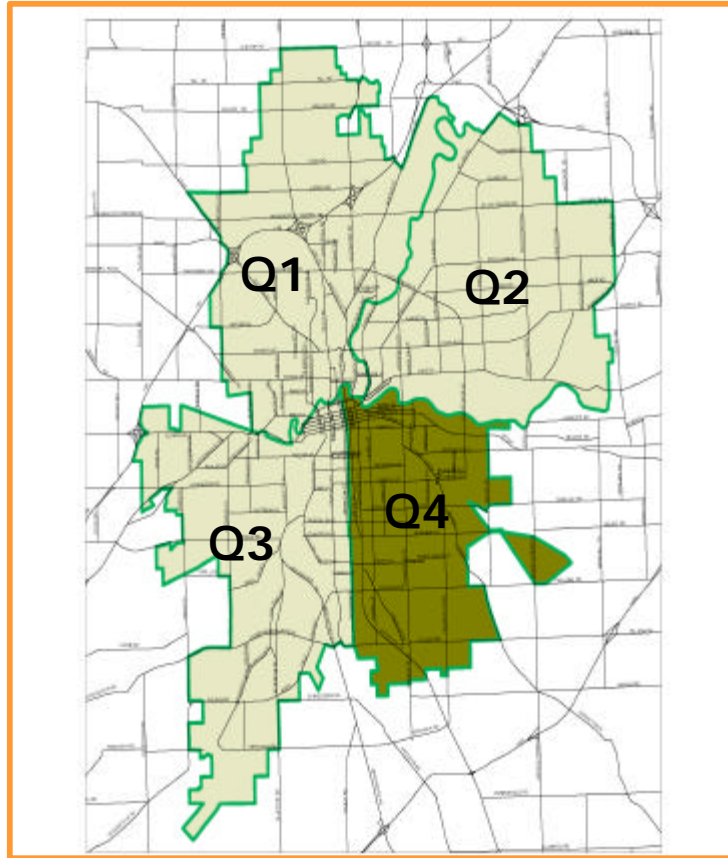
Fax: 260-449-7944

Email: [jsurbeck1@earthlink.net](mailto:jsurbeck1@earthlink.net)

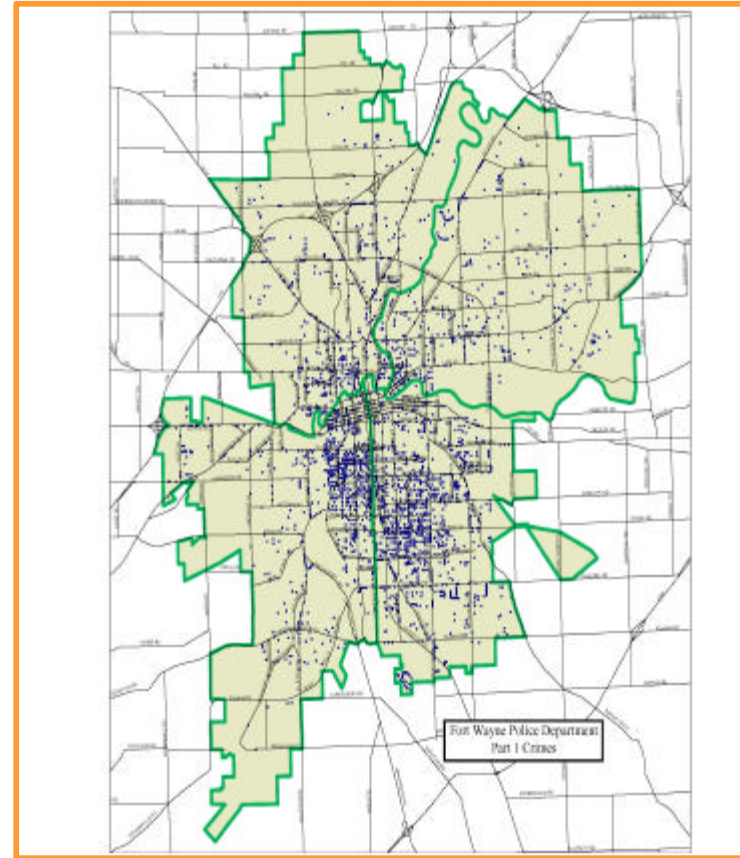
# ReEntry Court Project

- Majority of crime committed by people previously incarcerated
- Allen County recidivism rates mirrored national statistics
  - 45% returned to prison after 1 year
  - 55% returned to prison after 2 years
  - 67% after three years
- System not designed to address needs of or provide access to services for returning inmates

# Quadrant 4



# Part One Crimes



# ReEntry Court Mission Statement

The mission of the Allen County ReEntry Court is to enhance the reintegration of offenders into the community through the provision of necessary services to those returning offenders while protecting the safety of the community.

## **Goals:**

- Produce a system that would be effective with serious and violent offenders.
- Produce a system that would operate within local funding parameters.

# ReEntry Court Project

- Two-year Pilot: July 1, 2001 to June 30, 2003
- Targeted Southeast Quadrant of the City of Fort Wayne
- One year-long program that included a portion of parole time
- Initial incentive in the form of early release
- Incentive upon completion of program is possible reduction of remaining parole/probation time

# Community Transition Act

## (Indiana Code 11-12-10)

- Passed in 1999 to ease prison crowding
- Early release for selected inmates:
  - A and B Felons 120 Days
  - C Felons 90 Days
  - D Felons 60 Days
  - Nonviolent Drug Offenders 180 Days
- Voluntary Participation by counties
- Level of supervision and eligibility determined by sentencing Court
- DOC pays \$15.00 per day during early release

# Community Partners

- Allen Superior Court
- City of Ft Wayne
  - Police Department
  - Mayor's Office
- Indiana DOC
- Indiana Parole
- Indiana Criminal Justice Institute
- Park Center Community Mental Health Center
- Fort Wayne Housing Authority
- Faith-Based Organizations
- Neighborhoods
- Universities
- Businesses
- Workforce Investment Act Partners
- Division of Family and Children
- Prosecuting Attorney's Office
- Adult Probation Department



# ReEntry Court Project 2-Year Findings

- Data Collection
  - Collected Over Two Years
  - Extensive Demographic Data
  - Recidivism Data
    - Arrest and Return to Prison
  - Cost Data
  - Technical Violations

# 2 Year Pilot Results

## Cost Savings at 24 months

Within 1 <sup>st</sup> 24 Months	Number of Charges	Expected Number	Actual Cost	Expected Cost	Total Savings
Violent Offenses	16	16.31	\$304,064	\$1,776,873	\$1,472,809
Property Offenses	11	40.46	\$31,975	\$119,833	\$87,858
Drug Offenses	9	35.07	\$61,884	\$290,324	\$228,440
Public Order	18	25.82	\$179,922	\$172,532	\$(7,390)
Other	12	3.88	\$41,256	\$13,326	\$(27,930)
Totals	66	122	\$619,101	\$2,372,888	\$1,753,787

# 2 Year Pilot Results

## Total Savings (Cost) to State (24 Months)

	<b>Cost per Day</b>	<b># of Days</b>	
Cost of Incarceration	\$55.00	20,853	\$1,146,915
State Reimbursement	\$15.00	20,853	\$ 312,795
<b>Total Savings to State</b>	<b>\$40.00</b>	<b>20,853</b>	<b>\$ 834,120</b>

# 2 Year Pilot Results

## Savings to Community

(24 months)

Expected Cost of Re-offending      \$2,372,888

Actual Cost of Re-offending      \$619,101

**Total Savings To  
Community      \$1,753,787**

# 2 Year Pilot Results

## Operational Costs

(24 months)

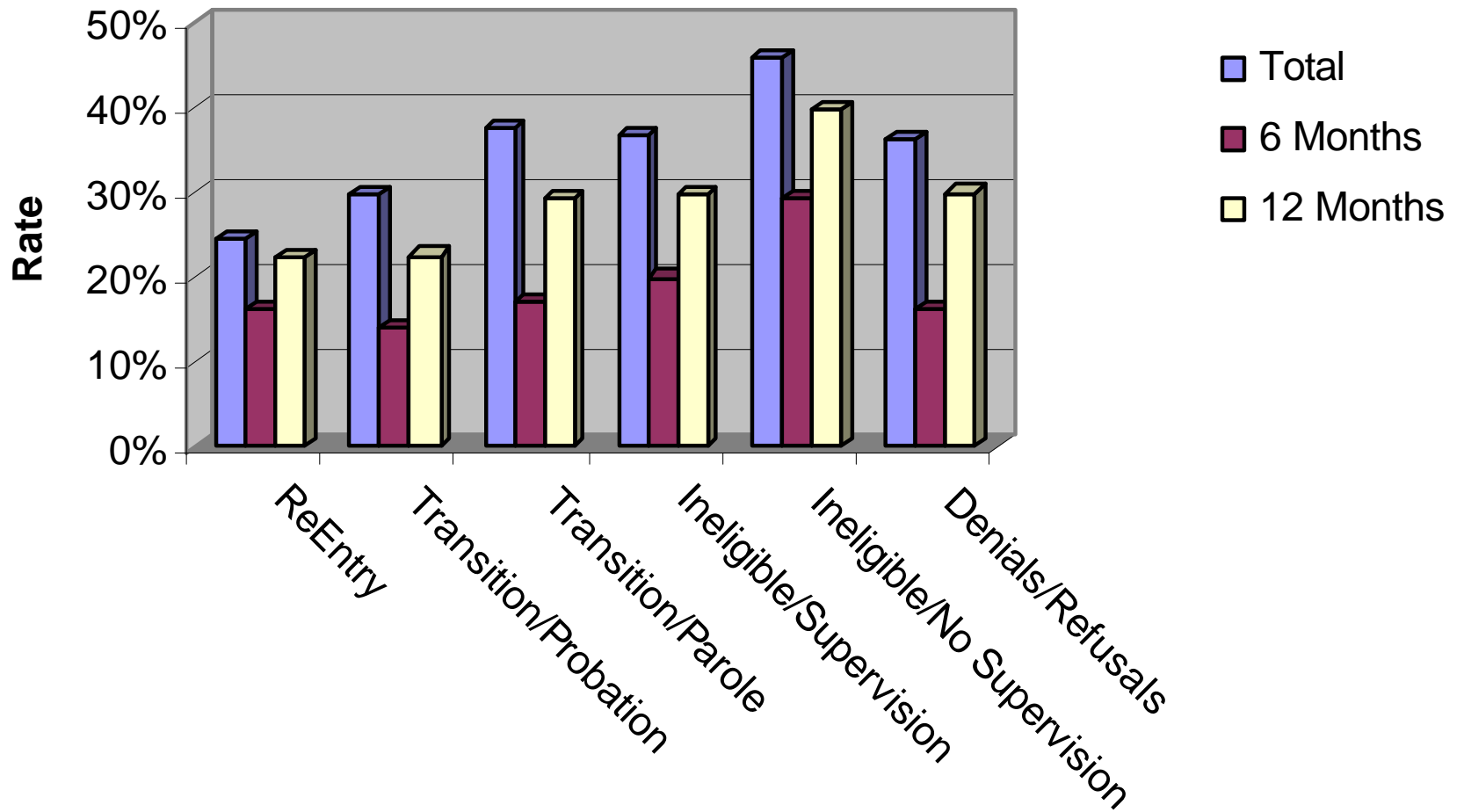
Actual Cost of Operation (\$250,000 per year)	\$500,000
Value of In-kind Services	\$135,000
<b>Total Cost of Operation</b>	<b>\$635,000</b>

# 2 Year Pilot Results

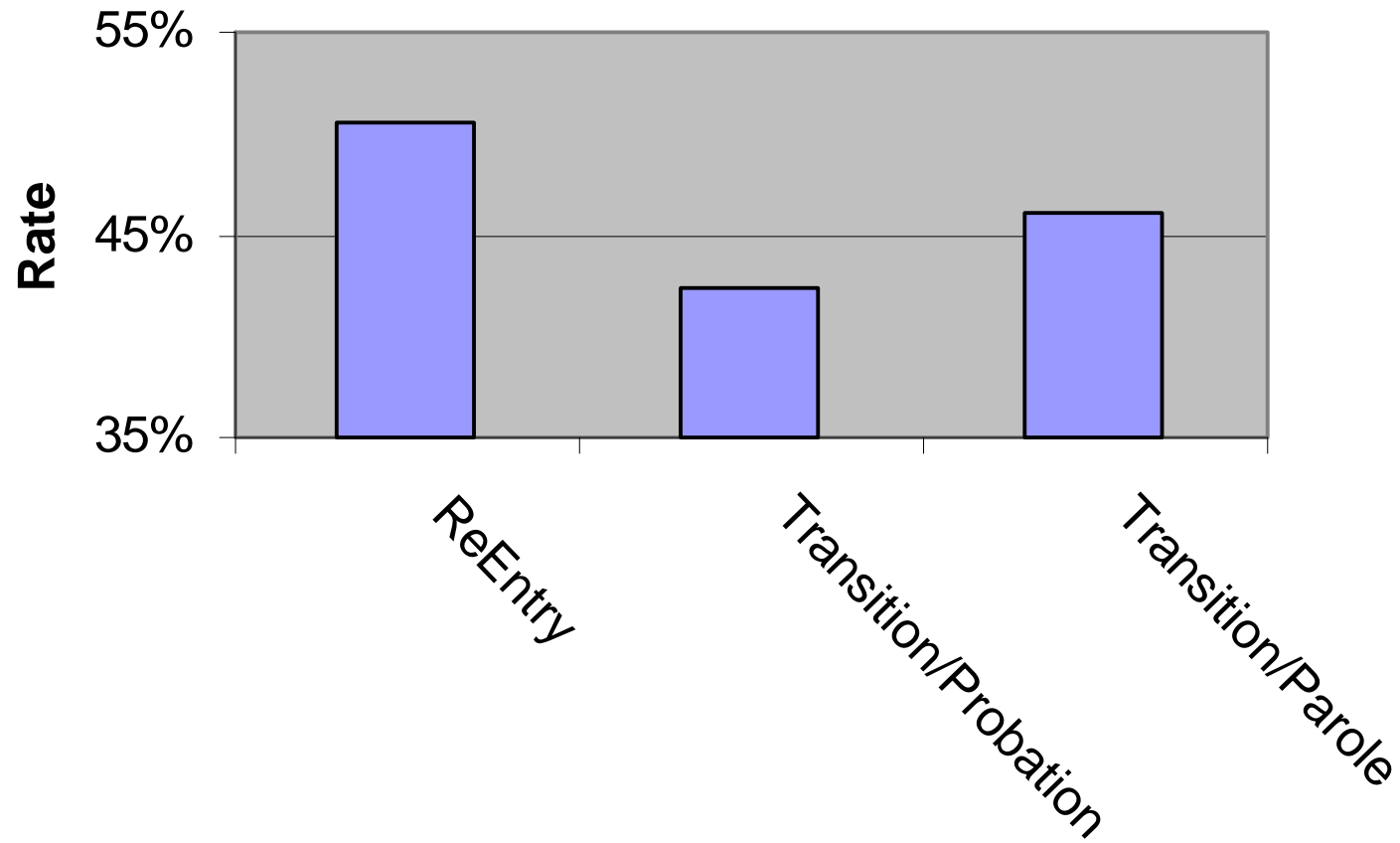
## Cumulative Savings

Total Savings to State	\$834,120
Total Savings to Community	\$1,753,787
Total Cost of Operation	\$(635,000)
<b>Total Savings</b>	<b>\$1,952,907</b>

# Rates of Rearrest Over Time



# Technical Violation Rates





# Sheila Hudson, Executive Director

## Allen County Community Corrections

### **Contact Information**

Allen County Community Corrections  
201 West Superior St  
Fort Wayne, IN 46802

Fax: 260-449-7308

Direct: 260-449-7252

Email: [sheila.hudson@co.allen.in.us](mailto:sheila.hudson@co.allen.in.us)

# Unique Elements

- Targeting of Serious and Violent Offenders
- Realignment of Resources
- Continual Judicial Involvement
- Forensic Mental Health Assessment
- Enhanced Police Supervision
- Team Approach to Case Management
- Cognitive Motivational Case Management
- Programs and Services

# Forensic Mental Health Assessment

- Clinical Interviews
  - High rates of Substance Abuse, Depression, and Personality Disorders
- Psychological Testing
  - Multiple Tests/Multiple Data points for increased confidence in diagnoses
- Hare Psychopathy Checklist
  - Highest Risk Offenders (18-20% of Offenders)

# Forensic Mental Health Assessment

## Psychopathy

- Personality Pattern
  - Lack of Empathy, Impulsive, Sensation Seeking, Lack of Relationship Bonding
- Why a concern
  - High Rates of Recidivism, Disrupt Programming
- Dangers
  - Empathy Training
  - Ignoring the Problem
- What Can be Done
  - Enhanced Police Supervision

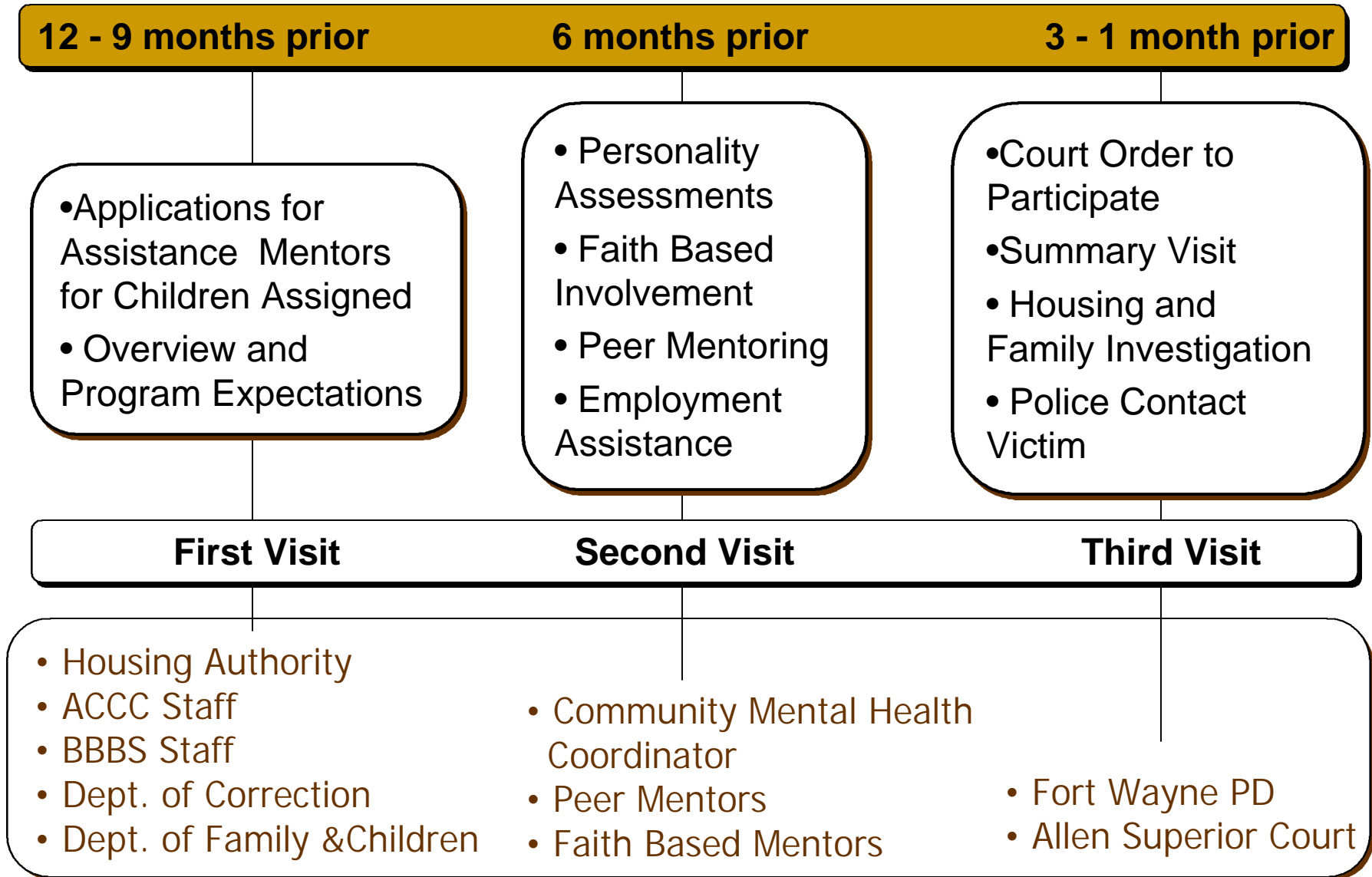
# ReEntry Team Composition

- ReEntry Director
- District Parole Supervisor
- Transition Coordinator
- Supervising Clinical Psychologist
- Mental Health Practitioners
- ReEntry Court Case Managers
- Adult Probation Officers

## Traveling Team Composition

- Community Mental Health Coordinator
- Mentors
- Community Corrections Staff
- Big Brothers Big Sisters Staff
- Peer Mentors

# ReEntry Court – Readiness Phase



# Enhanced Police Supervision

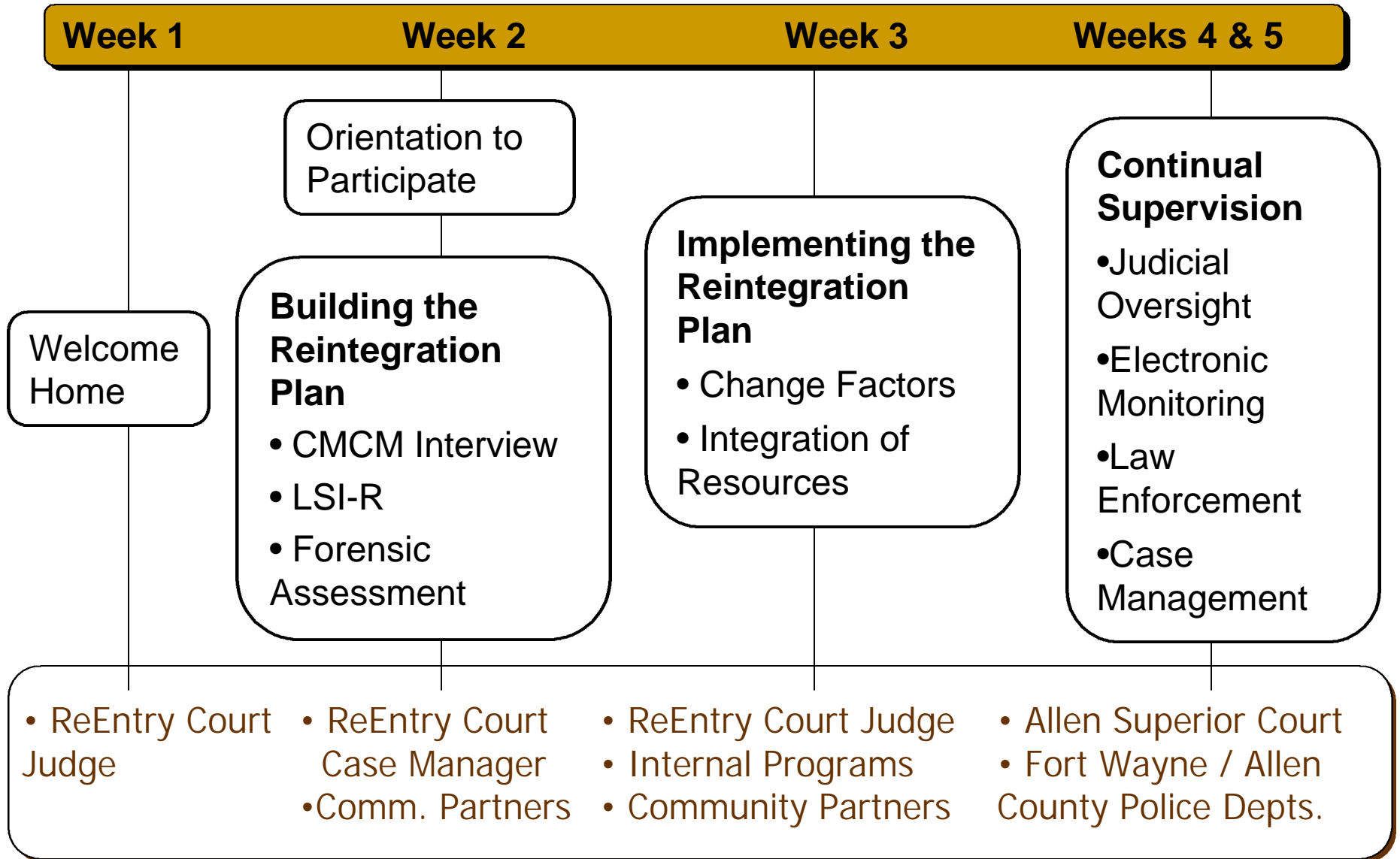
- **ReEntry Visitation Team**

- Initial visit with Deputy Chief to residence of victim to discuss safety concerns and safety plan;
- Second visit with Deputy Chief to relay welcome inmate back and discuss safety issues; and
- Subsequent visits with neighborhood reps or alone to provide information on neighborhood activities and resources and monitor progress.

- **Special Enforcement Team**

- Additional random home/work visits;
- Visits conducted during regular working shift when not on other assignment; and
- Responsible use of expanded discretionary search authority.

# ReEntry Court – Transition Phase I





# Internal Resources

- Substance Abuse Treatment:  
Intensive Outpatient Est. July, 1997
- Cognitive Behavioral Intervention:  
Choices Est. July, 1998
- Job-Readiness and Job Development:  
The Employment Academy Est. Aug, 2002
- Transitional Job Opportunity:  
Blue Jacket, Inc. Est. June, 2004
- Adult Education (GED Prep):  
Adult Basic Skills Est. June, 2004
- Motivational-Based Intervention:  
Focusing On Reentry (FOR) A Change Est. Sept, 2004

# Service Providers

- Counseling: Park Center Mental Health Center
- Mentoring: Big Brothers Big Sisters  
Faith-Based Organizations
- Housing: Fort Wayne Housing Authority
- Family Reintegration: Unity Christ Church *Family Reconnect Program*
- Post-Secondary Ed: Ivy Tech State College
- Temporary Assistance: Division of Family and Children  
Fort Wayne Housing Authority
- Parenting Skills: Community Action Northeast Indiana,  
Stop Child Abuse and Neglect

# ReEntry Court – Transition Phase II

Week 5 – 48

Month 6 – 12

Month 12 - 24

Judicial Oversight

Graduated Sanctions and Acknowledgement of Progress

Employment Academy

Blue Jacket, Inc.

Job Development

FOR a Change

Substance Abuse Treatment

Choices

MARKETPLACE

Adult Basic Skills (GED)

Community Resources

Cognitive Motivational Case Management

Enhanced Enforcement